

Health Life · Longest Care

# LGT-2520AP

Electromagnetic Focused Shockwave Therapy Device



**Longest**  
PHYSIO & REHAB DEVICES

**Guangzhou Longest Medical Technology Co., Ltd.**

**Address:** 301 & 401 of Building 2 & Building 3, No.96, Chuangqiang Road, Ningxi Street, Zengcheng District, Guangzhou, Guangdong Province, 511399, China

**Tel:** 86-020-66353999      **Fax:** 86-020-66353920

**E-mail:** export@longest.cn      **Website:** www.longestmedical.com



Health Life · Longest Care

**Longest**  
PHYSIO & REHAB DEVICES

# LGT-2520AP

## Electromagnetic Focused Shockwave Therapy Device

LGT-2520AP utilizes the advanced "Electromagnetic Shockwave" technology, which generates a pressure field that converges in the adjustable focus at determined depths in specific tissues where maximal pressure is achieved.

It can accurately target the root cause of musculoskeletal conditions, effectively relieve pain, promote tissue healing, and reduce inflammation.

### Principles of the Treatment

#### Mechanical Effect

When the shockwaves enter the affected area, it causes effects among tissue layers.

#### Cavitation Effect

The dynamic process of growth and collapse of micro-air-nucleated cavitation bubbles in liquid under the action of sound waves.

#### Analgesic Effect

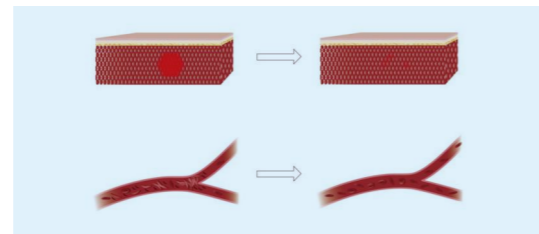
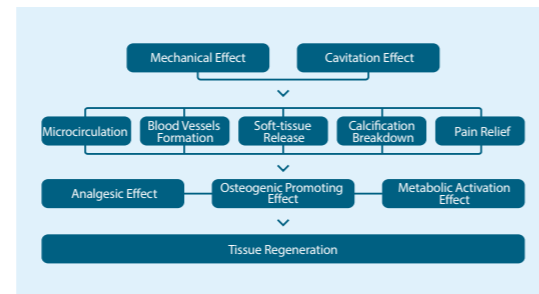
Shockwaves can affect pain nerve receptors, reduce nerve sensitivity and block nerve conduction, thereby relieving pain.

#### Osteogenic Promoting Effect

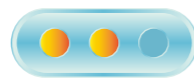
The shock wave acts on bone tissue and transmits signals to osteoblasts and osteoclasts to promote the reconstruction of bones.

#### Metabolic Activation Effect

Promote the production of related growth factors and stem cells, change the permeability of the cell membrane, and accelerate the ion exchange on both sides of the membrane. This causes angiogenesis and increases the local nutrient supply, and accelerates the repair process.



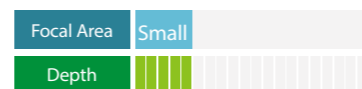
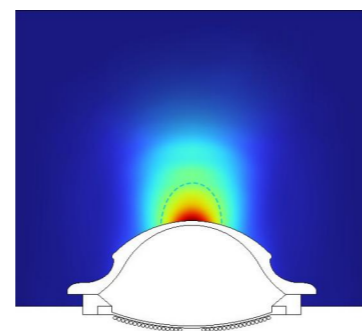
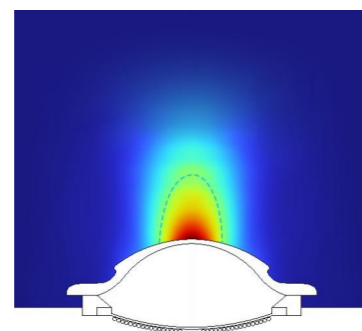
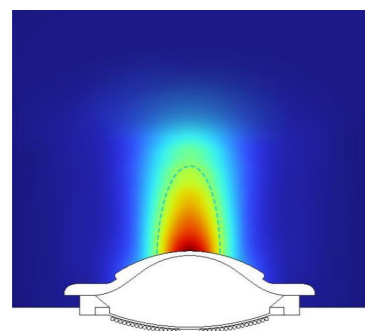
Level 1



Level 2



Level 3

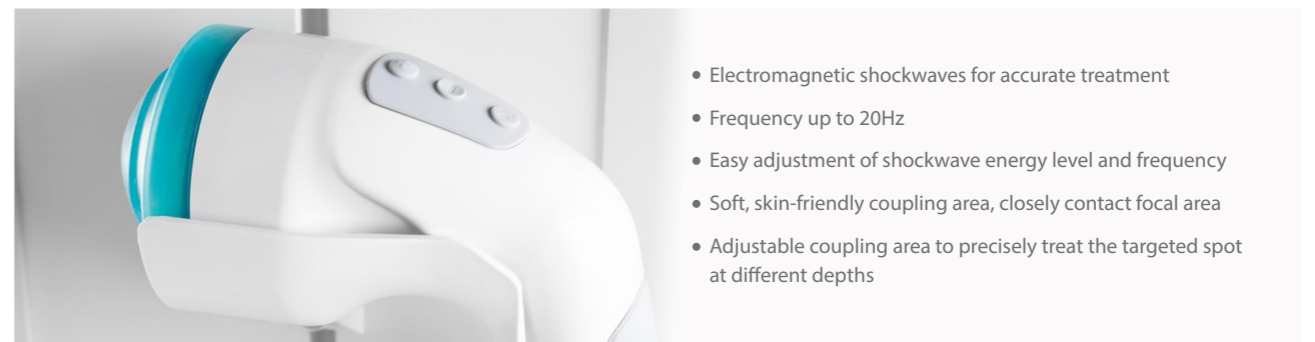


### Indications

- ⊗ Calcific Tendinitis
- ⊗ Lateral Epicondylitis
- ⊗ Plantar Fasciitis
- ⊗ Calcaneus Spur
- ⊗ Non-calcific Tendinitis
- ⊗ Iliotibial Band Syndrome
- ⊗ Achilles Tendinitis
- ⊗ Tibial Marginal Syndrome



### Features



- Electromagnetic shockwaves for accurate treatment
- Frequency up to 20Hz
- Easy adjustment of shockwave energy level and frequency
- Soft, skin-friendly coupling area, closely contact focal area
- Adjustable coupling area to precisely treat the targeted spot at different depths

#### ★ Inbuilt Protocol Library

With 3D body image to help locate the treatment site

#### ★ User-Defined Protocols

Personalize a protocol according to the specific needs of every patient. Upload protocol pictures to make your custom protocols more intuitive

#### ★ Patient Database

Create and store individualized treatment plans and treatment history for each patient



#### Image Guidance

The integration of image guidance with preset protocols offers improved accuracy and increased efficiency.



#### Focused Coupling Area

Adjustable coupling area to transmit the energy to tissues at different depths, with minimal energy loss.



#### Multiple Language Options

The device supports a wide range of languages to cater to diverse user needs.